



TEST REPORT

Applicant : Shanghai Jingtou Intelligent Technology Co., Ltd.
Address : Building 1, No.5601, Yanqian Highway, Fengxian District, Shanghai, China 201414

Report on the submitted samples said to be:

Sample Name(s) : Architectural Flexible Linear Lighting
Trade Mark : N/A
Tested Model No. : FlexWash-06_1616-15, NeonLine-01_2020-15
Model List : See appendix (See page 7)
Sample Received Date : September 26, 2025
Testing Period : September 26, 2025 ~ October 10, 2025
Date of Report : October 10, 2025
Testing Location : 901, No.40 Building, Xialang Industrial Zone, Heshuikou Community, Matian Street, Guangming District, Shenzhen, Guangdong, China
Results : Please refer to next page(s).

TEST REQUEST	CONCLUSION
As specified by client, based on the performed tests on submitted sample, the result of Lead(Pb), Cadmium(Cd), Mercury(Hg), Hexavalent Chromium(Cr(VI)), PBBs, PBDEs, Dibutyl Phthalate(DBP), Butylbenzyl Phthalate(BBP), Di-2-ethylhexyl Phthalate(DEHP) and Diisobutyl phthalate(DIBP) content comply with the limits set by RoHS Directive 2011/65/EU with amendment (EU) 2015/863.	PASS

Signed for and on behalf of LCS

Yin Dong

TRF-4-R-027 A/0



Shenzhen LCS Compliance Testing Laboratory Ltd.
Add: 901, No.40 Building, Xialang Industrial Zone, Heshuikou Community, Matian Street, Guangming District, Shenzhen, Guangdong, China
Tel: +(86) 0755-82591330 | E-mail: webmaster@lcs-cert.com | Web: www.lcs-cert.com
Scan code to check authenticity

**A. EU RoHS Directive 2011/65/EU and its amendment directives**

Test method: Refer to IEC 62321-3-1:2013, Screening by X-ray Fluorescence Spectroscopy (XRF).

Test result(s):

Sample No.	Sample Description	Screening Result(s)						Date of sample submission/ Resubmission
		Cd	Pb	Hg	Cr [▼]	Br [▼]		
						PBBs	PBDEs	
1	Transparent soft plastic	BL	BL	BL	BL	BL	BL	2025-09-26
2	Milk white soft plastic	BL	BL	BL	BL	BL	BL	2025-09-26
3	FPC	BL	BL	BL	BL	BL	BL	2025-09-26
4	Surface-mount resistor	BL	BL	BL	BL	BL	BL	2025-09-26
5	Lamp bead	BL	BL	BL	BL	BL	BL	2025-09-26
6	Printed Circuit Board	BL	BL	BL	BL	X	X	2025-09-26
7	Transparent hard plastic	BL	BL	BL	BL	BL	BL	2025-09-26
8	Solder	BL	OL	BL	BL	/	/	2025-09-26
9	Label paper	BL	BL	BL	BL	BL	BL	2025-09-26
10	Silver-colored wire core	BL	BL	BL	BL	/	/	2025-09-26
11	Black silicone	BL	BL	BL	BL	BL	BL	2025-09-26
12	Red silicone	BL	BL	BL	BL	BL	BL	2025-09-26
13	White silicone	BL	BL	BL	BL	BL	BL	2025-09-26
14	Paper	BL	BL	BL	BL	BL	BL	2025-09-26

Note:

- Results were obtained by XRF for primary screening, and further chemical testing by ICP(for Cd, Pb, Hg), UV-Vis(for Cr(VI)) and GC-MS(for PBBs, PBDEs) are recommended to be performed, if the concentration exceeds the below warning value according to IEC 62321-3-1:2013(Unit: mg/kg).

Element	Polymers	Metals	Composite material
Cd	$BL \leq (70-3\sigma) < X < (130+3\sigma) \leq OL$	$BL \leq (70-3\sigma) < X < (130+3\sigma) \leq OL$	$LOD < X < (150+3\sigma) \leq OL$
Pb	$BL \leq (700-3\sigma) < X < (1300+3\sigma) \leq OL$	$BL \leq (700-3\sigma) < X < (1300+3\sigma) \leq OL$	$BL \leq (500-3\sigma) < X < (1500+3\sigma) \leq OL$
Hg	$BL \leq (700-3\sigma) < X < (1300+3\sigma) \leq OL$	$BL \leq (700-3\sigma) < X < (1300+3\sigma) \leq OL$	$BL \leq (500-3\sigma) < X < (1500+3\sigma) \leq OL$
Cr	$BL \leq (700-3\sigma) < X$	$BL \leq (700-3\sigma) < X$	$BL \leq (500-3\sigma) < X$
Br	$BL \leq (300-3\sigma) < X$	N/A	$BL \leq (250-3\sigma) < X$

TRF-4-R-027 A/0



Shenzhen LCS Compliance Testing Laboratory Ltd.
Add: 901, No.40 Building, Xialang Industrial Zone, Heshuikou Community, Matian Street, Guangming District, Shenzhen, Guangdong, China
Tel: +(86) 0755-82591330 | E-mail: webmaster@lcs-cert.com | Web: www.lcs-cert.com
Scan code to check authenticity



Remark:

- BL= Below Limit
 - OL= Over Limit
 - X= The range of needing to do further testing
 - 3σ = The reproducibility of analytical instruments
 - N/A= Not applicable
 - LOD= Detection limit
2. The XRF screening test for RoHS elements – The reading may be different to the actual content in the sample be of non-uniformity composition.
 3. The maximum permissible limit is quoted from the document RoHS Directive 2011/65/EU with amendment (EU) 2015/863.
 4. ▼=For restricted substances PBBs and PBDEs, the results show the total Br content, the restricted substance was Cr(VI), and the results showed the total Cr content.

RoHS Restricted Substances	Maximum Concentration Value (mg/kg) (by weight in homogenous materials)
Cadmium(Cd)	100
Lead(Pb)	1000
Mercury(Hg)	1000
Hexavalent Chromium(Cr(VI))	1000
Polybrominated biphenyls(PBBs)	1000
Polybrominated diphenylethers(PBDEs)	1000
Dibutyl Phthalate(DBP)	1000
Butylbenzyl Phthalate(BBP)	1000
Di-(2-ethylhexyl) Phthalate(DEHP)	1000
Diisobutyl phthalate(DIBP)	1000

Disclaimers:

This XRF Screening report is for reference purposes only. The applicant shall make its/his/her own judgment as to whether the information provided in this XRF screening report is sufficient for its/his/her purposes. The result shown in this XRF screening report will differ based on various factors, including but not limited to, the sample size, thickness, area, surface flatness, equipment parameters and matrix effect (e.g. plastic, rubber, metal, glass, ceramic etc.). Further wet chemical pre-treatment with relevant chemical equipment analysis are required to obtain quantitative data.



**B. EU RoHS Directive 2011/65/EU with amendment (EU) 2015/863 on Lead(Pb), PBBs, PBDEs, DBP, BBP, DEHP & DIBP content**

Test method:

Lead(Pb) Content:

Refer to IEC 62321-5:2013, by acid digestion and analysis was performed by inductively coupled plasma optical emission spectrometer (ICP-OES) or atomic absorption spectrometer (AAS).

PBBs & PBDEs Content:

Refer to IEC 62321-6:2015, by solvent extraction and analysis was performed by gas chromatography-mass spectrometer (GC-MS).

Phthalates(DBP, BBP, DEHP & DIBP) Content:

Refer to IEC 62321-8:2017, by solvent extraction and analysis was performed by gas chromatography-mass spectrometer (GC-MS).

Test result(s):

1) Lead(Pb)

Tested Item	MDL (mg/kg)	Test Result(s) (mg/kg)	Limit (mg/kg)
		8	
Lead(Pb) Content	5	N.D.	1000

2) Phthalates(DBP, BBP, DEHP & DIBP)

Tested Item(s)	MDL (mg/kg)	Test Result(s) (mg/kg)			Limit (mg/kg)
		1	2	11	
Dibutyl Phthalate(DBP) Content	50	N.D.	N.D.	N.D.	1000
Butylbenzyl Phthalate(BBP) Content	50	N.D.	N.D.	N.D.	1000
Di-(2-ethylhexyl) Phthalate(DEHP) Content	50	N.D.	N.D.	N.D.	1000
Diisobutyl phthalate(DIBP) Content	50	N.D.	N.D.	N.D.	1000

Tested Item(s)	MDL (mg/kg)	Test Result(s) (mg/kg)			Limit (mg/kg)
		12	13	14	
Dibutyl Phthalate(DBP) Content	50	N.D.	N.D.	N.D.	1000
Butylbenzyl Phthalate(BBP) Content	50	N.D.	N.D.	N.D.	1000
Di-(2-ethylhexyl) Phthalate(DEHP) Content	50	N.D.	N.D.	N.D.	1000
Diisobutyl phthalate(DIBP) Content	50	N.D.	N.D.	N.D.	1000

TRF-4-R-027 A/0



Shenzhen LCS Compliance Testing Laboratory Ltd.
Add: 901, No.40 Building, Xialang Industrial Zone, Heshuikou Community, Matian Street, Guangming District, Shenzhen, Guangdong, China
Tel: +(86) 0755-82591330 | E-mail: webmaster@lcs-cert.com | Web: www.lcs-cert.com
Scan code to check authenticity



Tested Item(s)	MDL (mg/kg)	Test Result(s) (mg/kg)	Limit (mg/kg)
		3+4+5+6+7+9	
Dibutyl Phthalate(DBP) Content	50	N.D.	1000
Butylbenzyl Phthalate(BBP) Content	50	N.D.	1000
Di-(2-ethylhexyl) Phthalate(DEHP) Content	50	N.D.	1000
Diisobutyl phthalate(DIBP) Content	50	N.D.	1000

TRF-4-R-027 A/0



Shenzhen LCS Compliance Testing Laboratory Ltd.
Add: 901, No.40 Building, Xialang Industrial Zone, Heshuikou Community, Matian Street, Guangming District,
Shenzhen, Guangdong, China
Tel: +(86) 0755-82591330 | E-mail: webmaster@lcs-cert.com | Web: www.lcs-cert.com
Scan code to check authenticity

**3) Polybrominated Biphenyls(PBBs) & Polybrominated Diphenyl Ethers(PBDEs)**

Tested Item(s)	MDL (mg/kg)	Test Result(s) (mg/kg)	Limit (mg/kg)
		6	
Polybrominated Biphenyls(PBBs) Content			
Monobromobiphenyl	5	N.D.	/
Dibromobiphenyl	5	N.D.	/
Tribromobiphenyl	5	N.D.	/
Tetrabromobiphenyl	5	N.D.	/
Pentabromobiphenyl	5	N.D.	/
Hexabromobiphenyl	5	N.D.	/
Heptabromobiphenyl	5	N.D.	/
Octabromobiphenyl	5	N.D.	/
Nonabromodiphenyl	5	N.D.	/
Decabromodiphenyl	5	N.D.	/
Total content	/	N.D.	1000
Polybrominated Diphenylethers(PBDEs) Content			
Monobromodiphenyl ether	5	N.D.	/
Dibromodiphenyl ether	5	N.D.	/
Tribromodiphenyl ether	5	N.D.	/
Tetrabromodiphenyl ether	5	N.D.	/
Pentabromodiphenyl ether	5	N.D.	/
Hexabromodiphenyl ether	5	N.D.	/
Heptabromodiphenyl ether	5	N.D.	/
Octabromodiphenyl ether	5	N.D.	/
Nonabromodiphenyl ether	5	N.D.	/
Decabromodiphenyl ether	5	N.D.	/
Total content	/	N.D.	1000

TRF-4-R-027 A/0



Shenzhen LCS Compliance Testing Laboratory Ltd.
Add: 901, No.40 Building, Xialang Industrial Zone, Heshuikou Community, Matian Street, Guangming District,
Shenzhen, Guangdong, China
Tel: +(86) 0755-82591330 | E-mail: webmaster@lcs-cert.com | Web: www.lcs-cert.com
Scan code to check authenticity



Note:

- MDL = Method Detection Limit
 - N.D. = Not Detected (<MDL)
 - mg/kg= milligram per kilogram=ppm
 - According to customer's requirement, only the appointed materials have been tested.
- According to the client's statement, the results of point 1 ~ 14 are quoted from point 1 ~ 14 of the report
- LCSA09265100R, and the original data is directly quoted, the referenced samples are not tested this time.

APPENDIX :

According to client's declaration, tested material would be produced as relevant product(s).

Model	Rating
FlexWash-06_1616-15	DC24V
NeonLine-01_2020-15	DC24V
FlexWash-X_Y-Z	DC24V
NeonLine-X_Y-Z	DC24V
FlexGround-X_Y-Z	DC24V
FlexLine-X_Y-Z	DC24V
ArchFlex-X_Y-Z	DC24V
GlowLine-X_Y-Z	DC24V

Remark: X=01, 02, 03, 04, 05, 06, 07, 08, 09, 10...

Y= 3525, 2620, 2527, 2420, 2222, 2020, 1616, 3020, 2222, 2020, 2016, 2014, 1220, 1018, 1617, 1616, 1615, 1515, 1414, 1313, 1212, 1010, 4965, 4073, 2163, dia50, dia40, dia25, dia18, dia16, dia13, dia8...

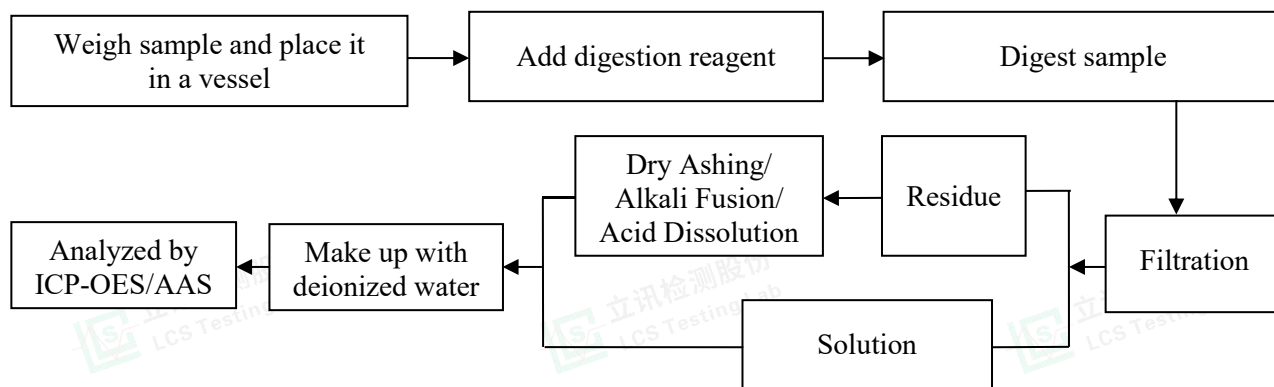
Z= 48W, 42w, 40w, 36w, 32w, 28w, 24w, 20w, 18w, 15w, 12w, 10w, 8w, 6w, 5w...



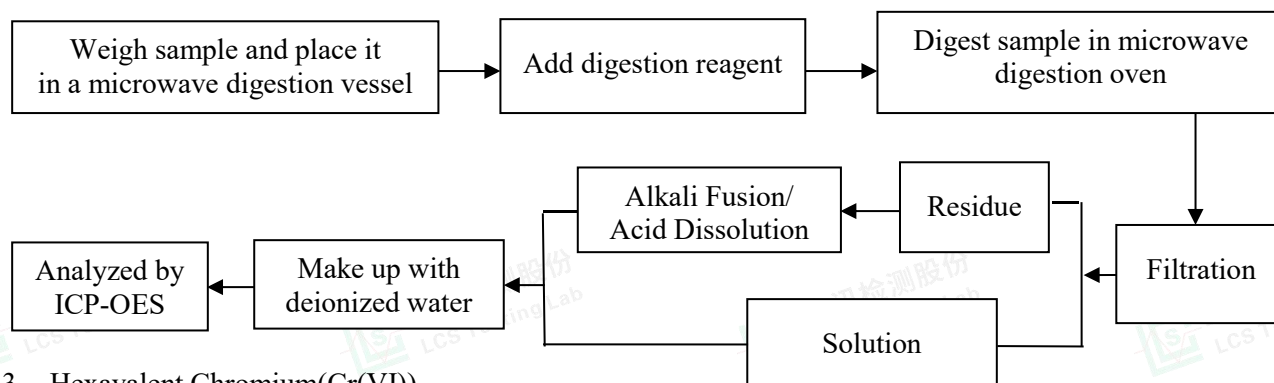


Test Process

1. Lead(Pb) & Cadmium(Cd): IEC 62321-5:2013

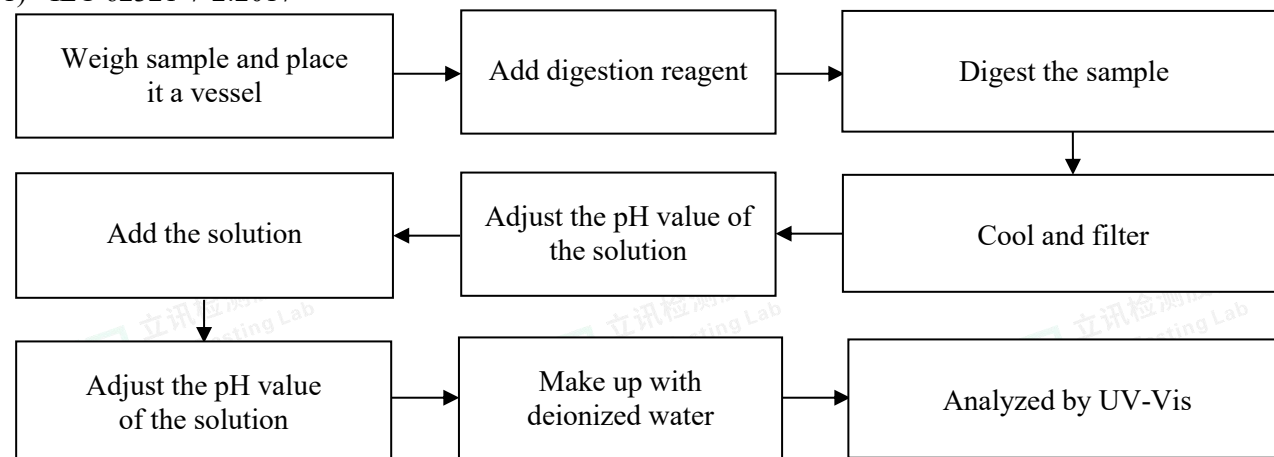


2. Mercury(Hg): IEC 62321-4:2013+AMD1:2017 CSV



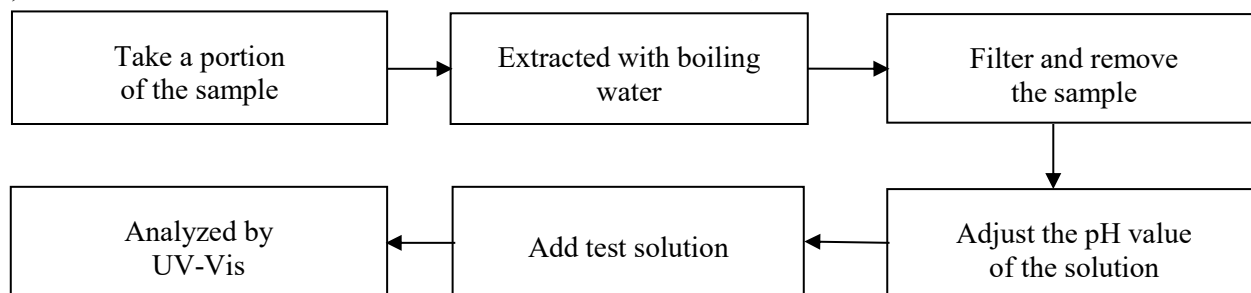
3. Hexavalent Chromium(Cr(VI))

1) IEC 62321-7-2:2017

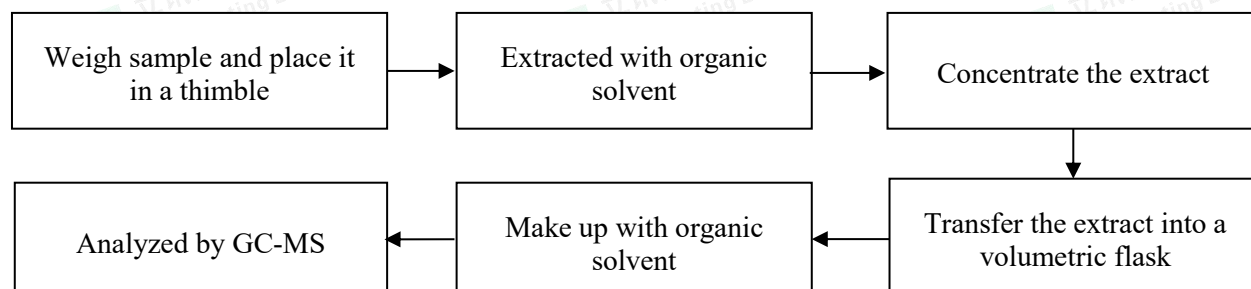




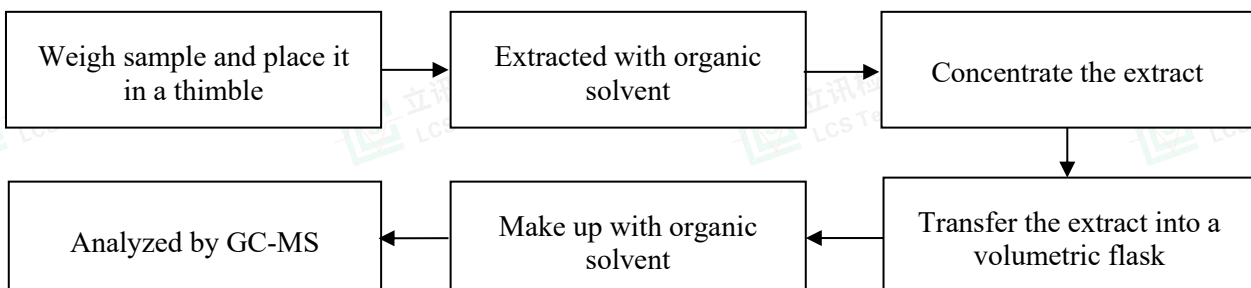
2) IEC 62321-7-1:2015



4. Polybrominated Biphenyls(PBBs) & Polybrominated Diphenyl Ethers(PBDEs) : IEC 62321-6:2015

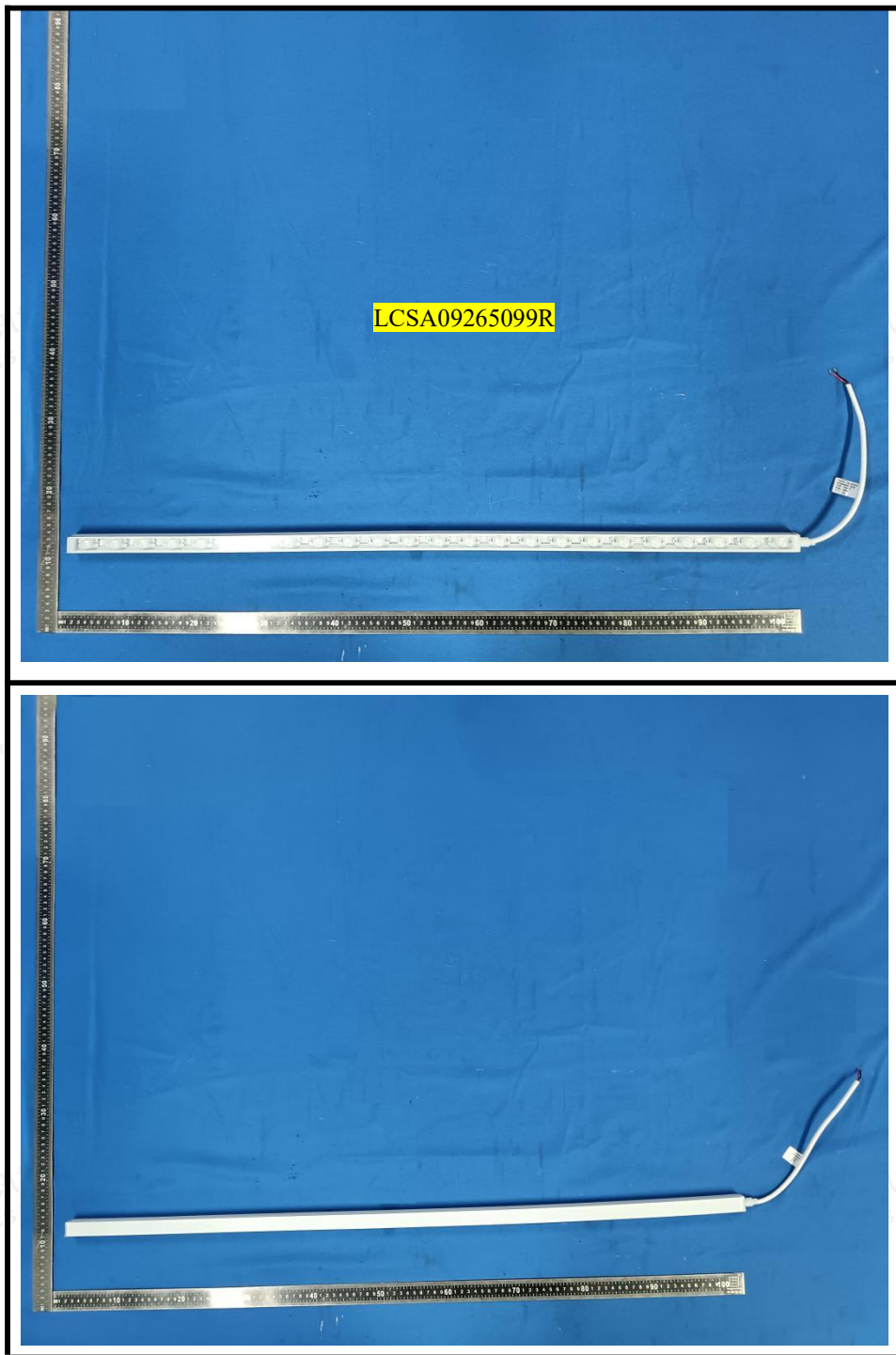


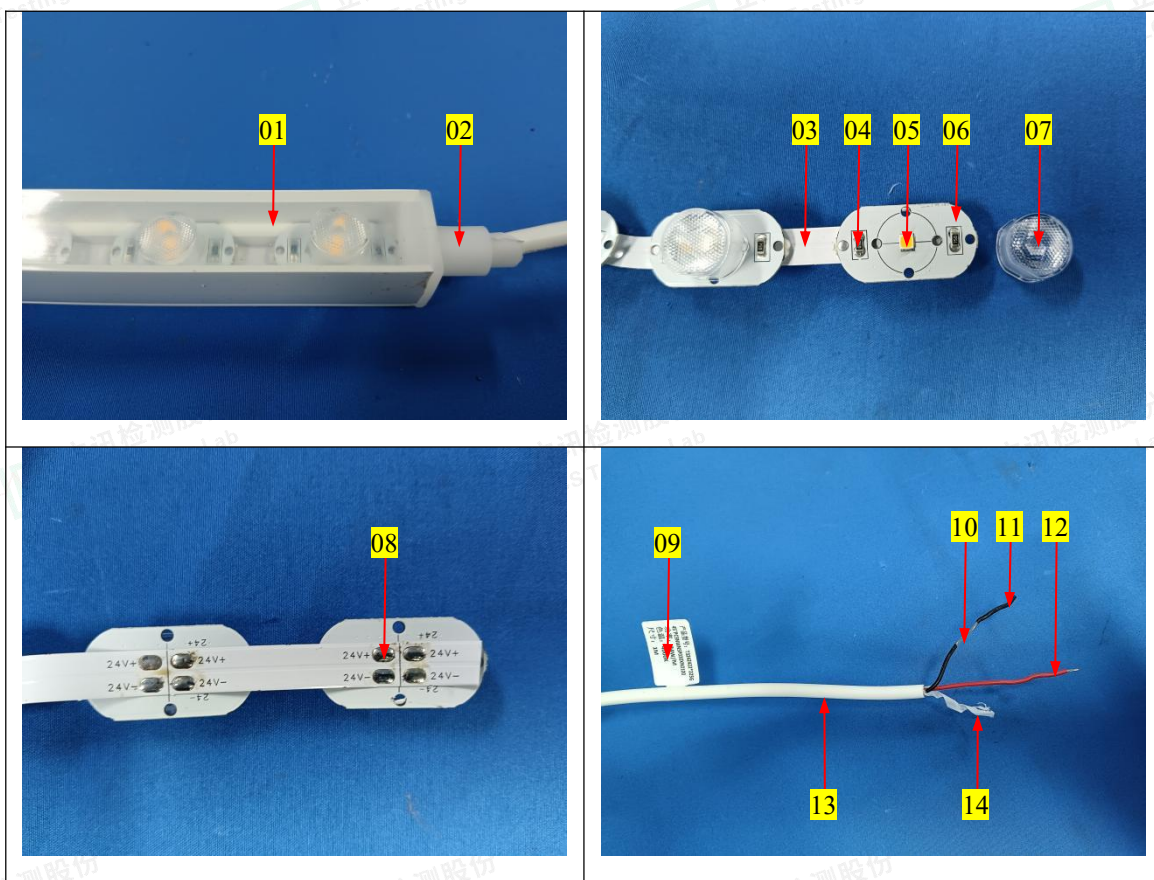
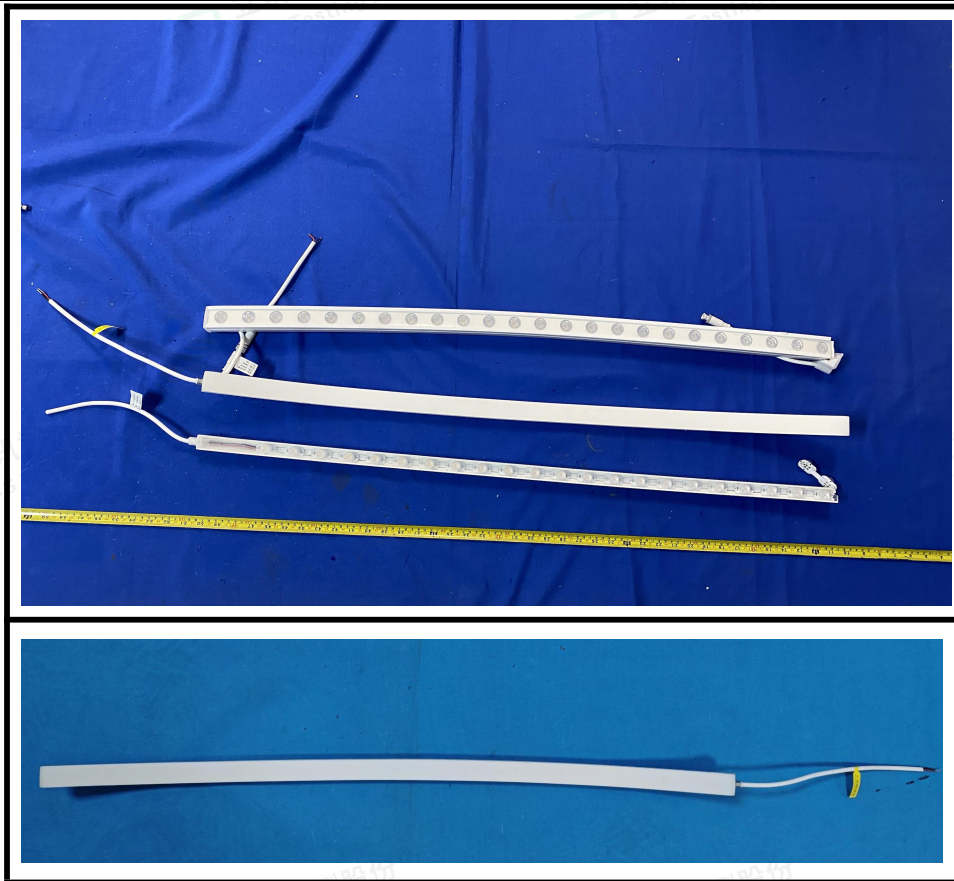
5. Phthalates(DBP, BBP, DEHP & DIBP) : IEC 62321-8:2017





The photo(s) of the sample





TRF-4-R-027 A/0



Shenzhen LCS Compliance Testing Laboratory Ltd.
Add: 901, No.40 Building, Xialang Industrial Zone, Heshuikou Community, Matian Street, Guangming District, Shenzhen, Guangdong, China
Tel: +(86) 0755-82591330 | E-mail: webmaster@lcs-cert.com | Web: www.lcs-cert.com
Scan code to check authenticity

**Statement:**

1. The test report is invalid without the signature of the approver and the special seal for the company's report;
2. The company name, address and sample information shown on the report were provided by the applicant who should be responsible for the authenticity which are not verified by LCS;
3. The test results in this report are only responsible for the tested samples;
4. Without written approval of LCS, this report can't be reproduced except in full;
5. In case of any discrepancy between the corresponding Chinese and English contents in the test report, the Chinese version shall prevail.

*** End of Report ***

